

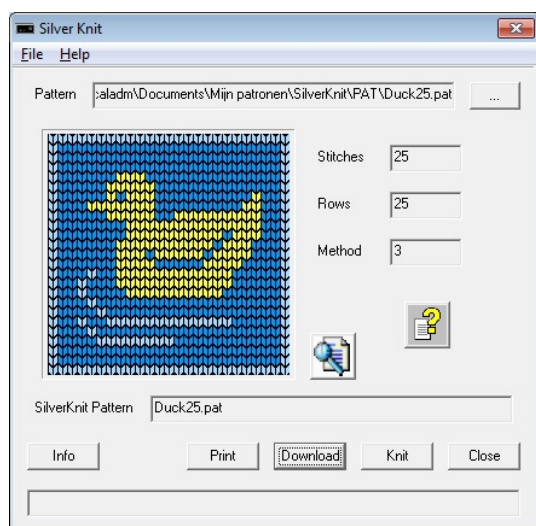
# SilverKnit

SilverKnit Pattern Control Device for Silver Reed SK830, SK840, SK860, SK890, SK550, SK560, SK580, SA-3E knitting machines.



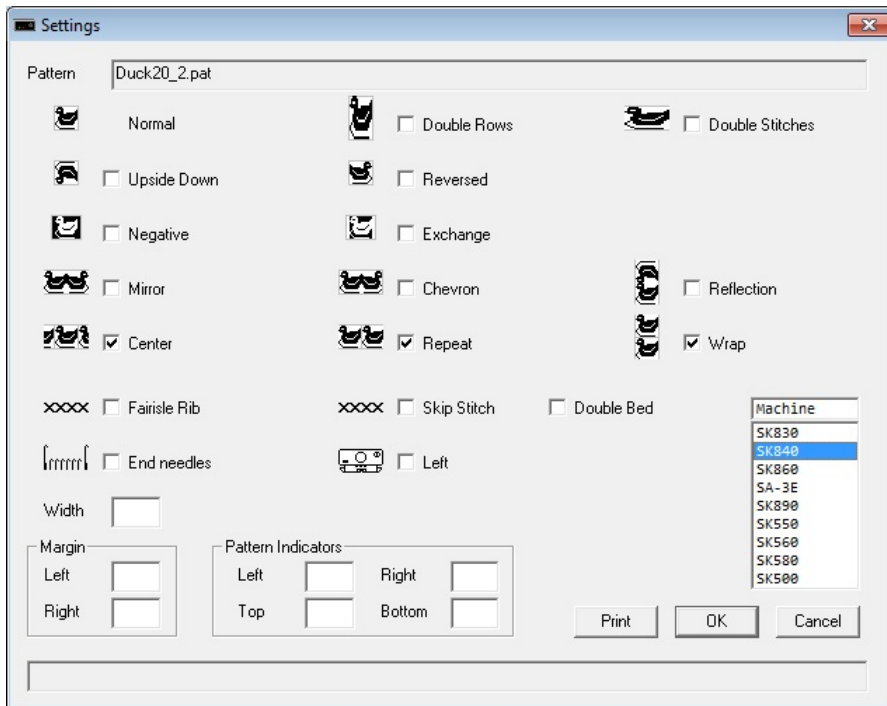
## Features

The SilverKnit package allows you to knit the majority of stitch pattern formats on Silver Reed electronic knitting machines. SilverKnit can handle stitch patterns of 250 stitches wide by 2000 rows. The SilverKnit unit connects directly to your knitting machine using the curl cord to transfer the information to the machine as you knit. You transfer your pattern to the SilverKnit via the USB connection of your computer.



You can reverse, center, double length, double width and multiple other variations by selecting the option on the download screen. Designed for simplicity of use it makes electronic knitting easy.

The SilverKnit puts creativity at your fingertips. You program your pattern on your computer with your favorite graphics program or obtain an existing pattern, download it to the SilverKnit and you can knit your garments.



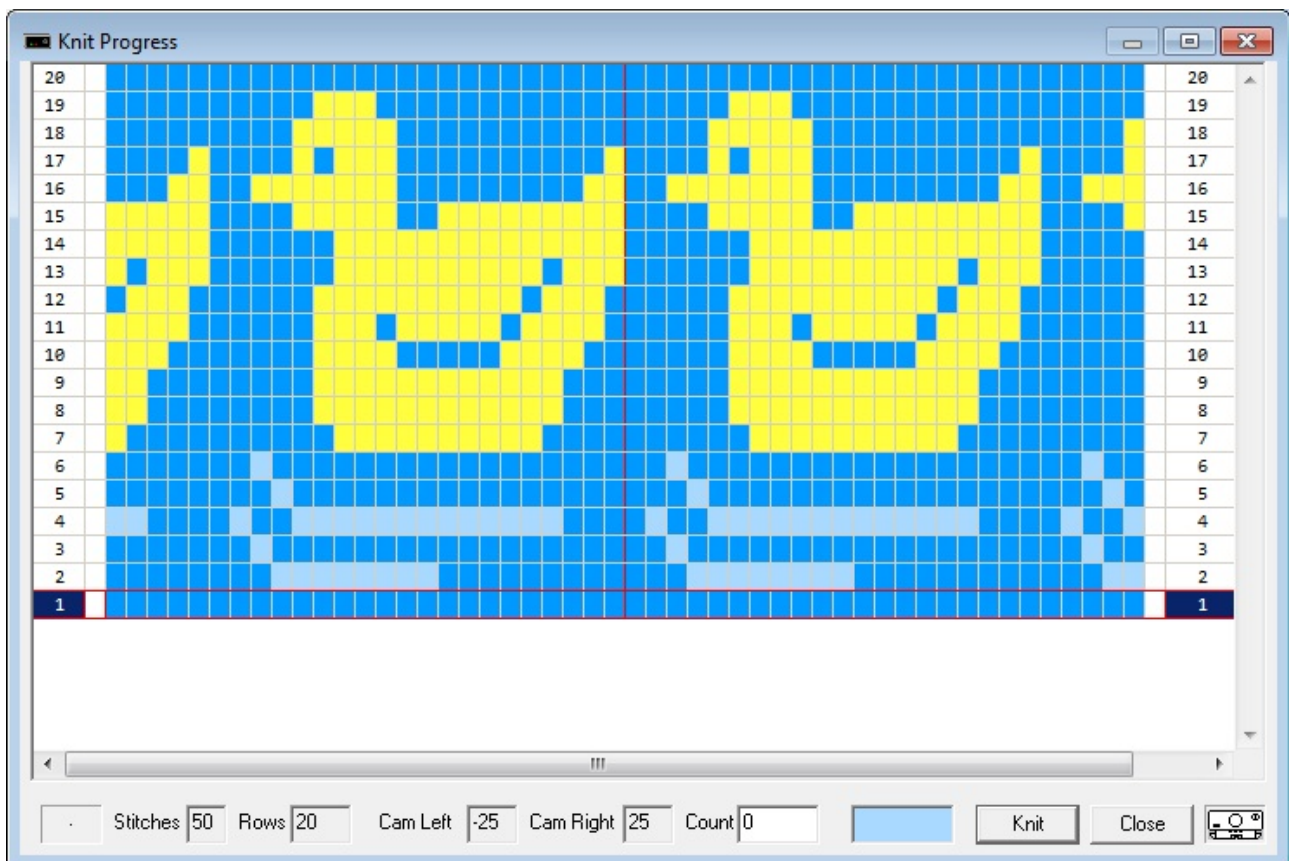
Stitch patterns are stored on your computer and can be recalled for knitting later.

Variations add versatility to a single design.

Just select the option on the download screen to alter the design. Single motif, center, upside down, negative, reversed, mirror, chevron, reflection, auto repeat, 2 and 3 color Jacquard in both skip stitch (with and without ribber) and fairisle rib, double length, double width, continuous knit, end needle selection and almost any combination of these.

Pattern indicators enable you to knit the portion of the pattern you want to knit.

### On screen display.



Your computer screen displays the stitches to be knitted and the progress of your knitting. You can select with a single click the row where you want to start knitting. The full screen of your computer can be used to display your pattern as it will be knitted. A row counter, point cam placement, carriage position and contrast color indication are displayed too.

The SilverKnit software can be upgraded to DK7 or DK8 using SilverKnit hardware.